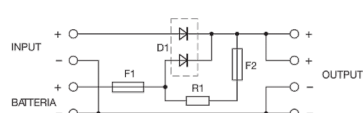
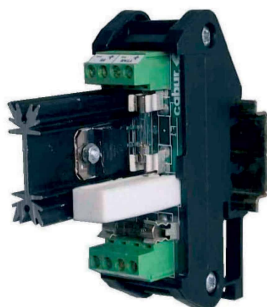
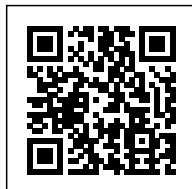


## DC-UPS module 12-24Vdc/ 12-24Vdc 10A



Code	XCSBC
Type	CSBC
HS code	85044083
<b>INPUT TECHNICAL DATA</b>	
Input rated voltage	12-24 Vdc
Input voltage DC	6...30 Vdc
Current consumption	> 3 A
<b>OUTPUT TECHNICAL DATA</b>	
Output voltage range	12-24 Vdc
Output adjustable range	Vin-0.2 normal operation / Vbatt-0.2 battery operation (max. 29 Vdc)
Continuous current	10 A at 45°C
Battery safety fuse	Fuse: 6.3 A replaceable
Battery type	Lead-Acid
Battery capacity	max. 4 Ah (12 Vdc) / max. 10 Ah (24 Vdc)
Charging current	0.5 A (12 Vdc) / 1 A (24 Vdc)
Battery disconnection voltage	function not present
Protection	short-circuit / battery overload
<b>GENERAL TECHNICAL DATA</b>	
Efficiency	88%
Dissipated power	7.5 W (12 Vdc) 15 W (24 Vdc)
Operating temperature range	-20...+50°C
Overvoltage category / pollution degree	II / 2
Protection degree	IP 00
Connection terminal	2.5 mm <sup>2</sup> / 2.5 mm <sup>2</sup>
Housing material	UL94V-0 plastic material
Dimensions (LxHxD)	26x80x93 mm
Approximate weight	80 g
Mounting information	vertical on a rail, 10 mm from adjacent components
<b>ACCESSORIES</b>	
Mounting rail (IEC60715/TH35-7.5)	PR/3/AC, PR/3/AC/ZB, PR/3/AS, PR/3/AS/ZB
Mounting rail (IEC60715/TH35-15)	PR/3/PP, PR/3/PP/ZB, PR/3/PA, PR/3/PA/ZB
APPROVALS AND MARKINGS	CE



\* Connected to a DC line, allow to supply loads and charge the backup battery\* Suitable for Lead-Acid batteries\* Suitable for power supplies with adjustable output  
**1** Please refer to the datasheet or operating instruction for more details  
**2** In order to complete the charge, the DC output of the power supply must be 2-3V more than nominal voltage of the battery  
**3** XCSBC does not prevent deep discharge of the battery

## PRODUCT DESCRIPTION

CSBC DC-UPS module  
12-24Vdc/ 12-24Vdc 10A