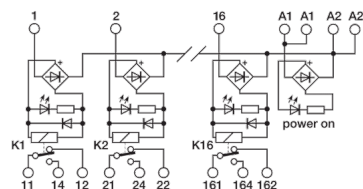
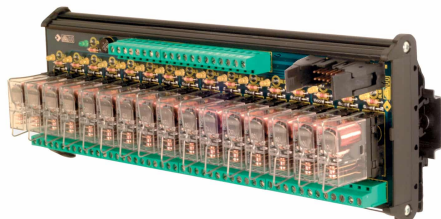
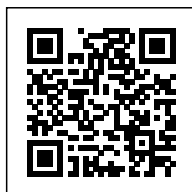


16 electromechanical relay  
24Vac/dc SPDT 16A, screw, pluggable



| Series                                  |   |
|---|---|
| Code                                    | XR161EAD  |
| Type                                    | R161EAD   |
| HS code                                 | 85364190  |
| INPUT TECHNICAL DATA                    |   |
| Input rated voltage                     | 24 Vac/dc $\pm 10\%$                                  |
| Pull in / drop out voltage type         | 16.8 V / 2.4 V  |
| Current consumption                     | 22 mA $\pm 10\%$                                      |
| Turn ON / OFF time                      | 10 ms / 5 ms  |
| Protection circuit                      | Free-wheel diode, Reverse polarity                    |
| Connection terminal                     | 2.5 mm <sup>2</sup> screw type and 20 poles connector |
| Input channels                          | 16 pluggable  |
| OUTPUT TECHNICAL DATA                   |   |
| Contact type                            | SPDT, 1 form C, AgSnO <sub>2</sub>                    |
| Nominal current                         | 16 A (250 Vac)  |
| Continuous current                      | 16 A  |
| Connection type                         | 2.5 mm <sup>2</sup> screw type                        |
| GENERAL TECHNICAL DATA                  |   |
| Operating temperature range             | -20...+70°C   |
| Input / output isolation                | 2.5 kVac / 60 s                                       |
| Protection degree                       | IP 00   |
| Overvoltage category / pollution degree | II / 2  |
| Status indication                       | LED "DC OK" / LED "Relay"                             |
| Housing material                        | UL94V-0 plastic material                              |
| Dimensions (LxHxD)                      | 250x93x75 mm  |
| Approximate weight                      | 688 g   |
| Mounting information                    | on a rail, side by side                               |
| ACCESSORIES                             |   |
| Mounting rail (IEC60715/TH35-7.5)       | PR/3/AC, PR/3/AC/ZB, PR/3/AS, PR/3/AS/ZB              |
| Mounting rail (IEC60715/TH35-15)        | PR/3/PP, PR/3/PP/ZB, PR/3/PA, PR/3/PA/ZB              |
| Spare part relay                        | 8904073   |
| APPROVALS AND MARKINGS                  | CE  |



\* Pluggable relay\* AC/DC input voltage\* SPDT contact\* Allow PNP and NPN command  
1 Manufacturer and model of the relay is not binding, technical data are to be considered typical

## PRODUCT DESCRIPTION

R161EAD  
16 electromechanical relay 24Vac/dc SPDT 16A, screw, pluggable