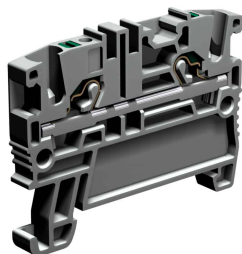
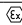
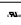

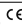

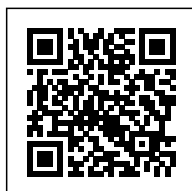


Push-in terminal block 2.5mm², 1-level, grey color



| | |
|--|---|
| Series | EFC |
| Code | EFC200GR |
| Type | EFC.2/GR |
| HS code | 85369010 |
| Colour | Grey |
| TECHNICAL FEATURES | |
| Function/Type | Feed-through |
| Rated cross-section | 2.5 mm ² |
| Connecting capacity | |
| Flexible wire | 0.2-4 mm ² |
| Rigid wire | 0.2-4 mm ² |
| Wire with ferrule - ferrule type | 2.5 mm ² - WP25/19 |
| Characteristics according to European standard IEC EN 60947-7-1 | |
| Maximum voltage AC/DC | 800 V |
| Maximum current (rated cross-section) | 24 A |
| Caliber | A3 |
| Characteristics according to UL | |
| Maximum voltage AC/DC | 600 V |
| Maximum current (rated cross-section) | 20 A |
| Section (min-max) | 24-12 (AWG) |
| Characteristics according to ATEX directive and IEC ex standard | |
| Maximum voltage AC/DC | 500 V |
| Maximum current (rated cross-section) | 20 A |
| Service temperature Min/Max | -40 °C / +110 °C |
| Rated impulse withstand voltage / pollution degree | 6 kV / 3 |
| Insulation stripping length | 9 mm |
| Width (pitch) | 5.2 mm |
| Length | 49.6 mm |
| Height mounted on TH35-7.5/TH35-15/G32 | 39.2 / 46.7 / - mm |
| Insulation material temperature index (EN 60216-1) | 130 °C |
| Plastic material | Polyamide UL94V-0 |
| ACCESSORIES | |
| End section | |
| Grey | EFC.2/PT/GR (cod. EFC201GR) |
| Blue | EFC.2/PT/BL (cod. EFC201BL) |
| Thickness | 1.5 mm |
| Cross-connection | EFC.2/.../... (cod. EFC202...) |
| Rated current carrying capacity IEC/ATEX | 24 A / 20 A |
| Coloured partition plate | DFE.1+1/R (cod. DFE01R) |
| Marking | |
| Adhesive numbering strip | TMM102105AW (cod. TMM102105AW) |
| Snap-on numbering strip | TMM102105W (cod. TMM102105W) |
| Single marking tag | CNU/8/51 (cod. NU0851S), CNU/10/51 (cod. NU1051S) |
| Single marking tag for pitch insertion | CNU/8/51 (cod. NU0851S), CNU/10/51 (cod. NU1051S) |
| End bracket | |
| TH35 screw type | BT/3 (cod. BT003) |
| TH35 snap-fit type | BTO (cod. BT007) |
| TH35 and G32 snap-fit type | BTU (cod. BT005) |
| DIN rail according to IEC 60715/TH35 | PR/3/.. |
| APPROVALS AND MARKINGS |      |



* Reduced wiring time
* Wire release push button

1 For more details on accessories, refer to the relevant chapters

PRODUCT DESCRIPTION

EFC.2/GR Push-in terminal block 2.5mm², 1-level, grey color