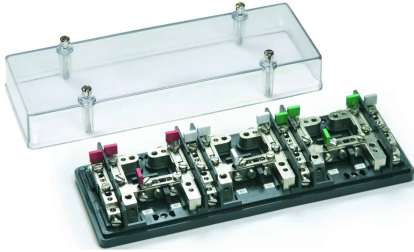
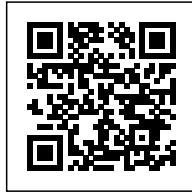
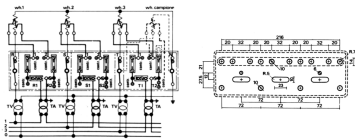


3-phase control terminal board,
red color, rear-entry connection



Series	MCM
Code	MC203R
Type	MCM.3/R
HS code	85369010
Colour	Red
TECHNICAL FEATURES	
Function/Type	Sectioning and measurement
Rated cross-section	6 mm ²
Rated cross-section	
Connecting capacity	
Flexible wire	0.5-6 mm ²
Rigid wire	0.5-6 mm ²
Characteristics according to European standard IEC EN	
Characteristics according to UL	
Characteristics according to ATEX directive and IEC ex standard	
Maximum voltage AC/DC	500 V
Maximum current (rated cross-section)	57 A
Protection degree	IP20
Rated impulse withstand voltage / pollution degree	6 kV / 3
Insulation stripping length	-
Tightening torque value (nom. / max.)	1.2 Nm
Dimension	85x245x48 mm (AxBxH)
Plastic material	Kelon UL94V-0
ACCESSORIES	
Protection cover	MCM.3/CO (cod.MC003) (1)
APPROVALS AND MARKINGS	



- * For meters with three-phase and neutral insertion
- * Cable entry from the rear side with 4.1 mm hole
- * Transparent front cover

1 (1) The cover is already included in the terminal board, this article is to be considered as a spare in case of need

PRODUCT DESCRIPTION

MCM.3/R 3-phase
control terminal board, red color, rear-entry connection