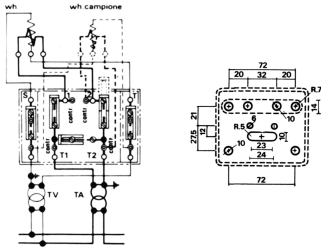
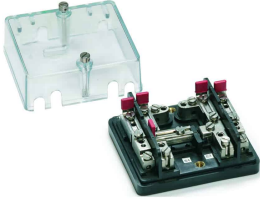
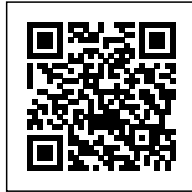


Single-phase control terminal  
board, red color, side-entry connection



<b>Series</b>	MCT/SA
<b>Code</b>	MC401R
<b>Type</b>	MCT.1/SA/R
<b>HS code</b>	85369010
<b>Colour</b>	Red
<b>TECHNICAL FEATURES</b>	
<b>Function/Type</b>	Sectioning and measurement
<b>Rated cross-section</b>	6 mm <sup>2</sup>
<b>Rated cross-section</b>	
<b>Connecting capacity</b>	
<b>Flexible wire</b>	0.5-6 mm <sup>2</sup>
<b>Rigid wire</b>	0.5-6 mm <sup>2</sup>
<b>Electrical characteristics according to IEC EN standard</b>	
<b>Electrical characteristics according to UL Standard</b>	
<b>Electrical characteristics according to ATEX directive and IEC Ex standard</b>	
<b>Maximum voltage AC/DC</b>	500 V
<b>Maximum current (rated cross-section)</b>	57 A
<b>Protection degree</b>	IP20
<b>Rated impulse withstand voltage / pollution degree</b>	6 kV / 3
<b>Insulation stripping length</b>	-
<b>Tightening torque value (nom. / max.)</b>	1.2 Nm
<b>Dimension</b>	85x95x48 mm (AxBxH)
<b>Plastic material</b>	Kelon UL94V-0
<b>ACCESSORIES</b>	
<b>Protection cover</b>	-
<b>APPROVALS AND MARKINGS</b>	



- \* For meters with single-phase insertion
- \* Side cable entry with 8 mm wide slot
- \* Transparent front cover

## PRODUCT DESCRIPTION

MCT.1/SA/R  
Single-phase control terminal board, red color, side-entry connection