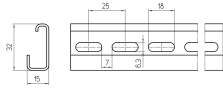
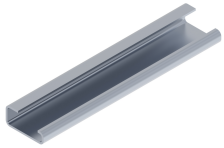


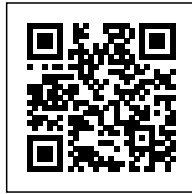
**Metal**  
mounting rail G32, galvanized steel



<b>Series</b>	PR
<b>Code</b>	PR901
<b>Type</b>	PR/DIN/AC/ZB
<b>HS code</b>	72166190
<b>TECHNICAL DATA</b>	
<b>Typology</b>	Mounting rails
<b>Sub-typology</b>	G32 type
<b>Colour</b>	-
<b>Package qty.</b>	20
<b>Material</b>	white galvanised steel "SENDZMIR" system
<b>Width (pitch)</b>	32 mm
<b>Length</b>	2 m
<b>Height</b>	15 mm
<b>Correlations</b>	BT005



Dimensioni in mm  
Dimensions in mm



**PRODUCT DESCRIPTION**

PR/DIN/AC/SZ Metal mounting rail G32, galvanized steel