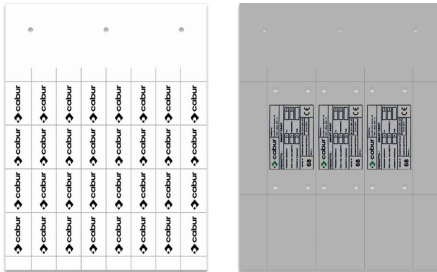


Rivetable methacrylate plate,  
60x100mm, white color, for SmartPrint-Plus



HS code	39269097, 39199080
Code	TAME60100W
Description	perforated label 60x100 mm
Material	Methacrylate
<b>SIZE in mm</b>	
Length	60
Width	100
<b>Print area</b>	
mm	58x85
<b>CABLE Ø mm</b>	
Colour	White
Plate	PLT01
Pcs Box	10



- \* Material: Methacrylate 0,7mm
- \* Working temperature: -30°C/+60°C
- \* Rub resistance: CEI 16-7

## PRODUCT DESCRIPTION

Rivetable methacrylate plate, 60x100mm, white color, for SmartPrint-Plus