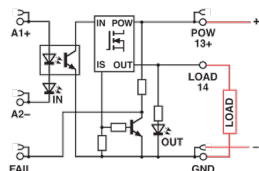
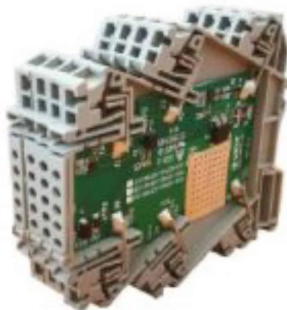


1 solid

state relay 5-24Vdc/24Vdc 8A spring, not pluggable



<b>Series</b>	CKS
<b>Code</b>	XCKS024DC024DC05
<b>Type</b>	CKS-024DC/024DC/05
<b>HS code</b>	85364190
<b>INPUT TECHNICAL DATA</b>	
<b>Input rated voltage</b>	5-12-24 Vdc (range 4.7...32 Vdc)
<b>Pull in / drop out voltage type</b>	4.5 V / 4.2 V
<b>Current consumption</b>	10 mA $\pm$ 10% at 24 Vdc
<b>Frequency</b>	200 Hz max.
<b>Protection circuit</b>	Free-wheel diode, Reverse polarity
<b>Connection terminal</b>	2.5 mm <sup>2</sup> (spring)
<b>Input channels</b>	1 not pluggable
<b>OUTPUT TECHNICAL DATA</b>	
<b>Contact type</b>	mosfet
<b>Output voltage</b>	5...32 Vdc
<b>Nominal current</b>	8 A (24 Vdc) at 45°C / 5 A (24 Vdc) at 20°C
<b>Continuous current</b>	21 A for 100 ms at 25°C (1)
<b>Leakage current with signal 0</b>	< 25 $\mu$ A at 24 Vdc
<b>Min applicable load</b>	10 mA / 5 V
<b>Connection type</b>	suppressor diode / short circuit, overload, overtemperature (2)
<b>GENERAL TECHNICAL DATA</b>	
<b>Operating temperature range</b>	-20...+60°C
<b>Input / output isolation</b>	2.5 kVac / 60 s
<b>Protection degree</b>	IP 00 / IP20 (3)
<b>Overvoltage category / pollution degree</b>	II / 2
<b>Status indication</b>	LED "Input" / LED "Output-Fail"
<b>Housing material</b>	UL94V-0 plastic material
<b>Dimensions (LxHxD)</b>	6x91x100 mm
<b>Approximate weight</b>	30 g
<b>Mounting information</b>	on a rail, side by side
<b>ACCESSORIES</b>	
<b>Mounting rail (IEC60715/TH35-7.5)</b>	PR/3/AC, PR/3/AC/ZB, PR/3/AS, PR/3/AS/ZB
<b>Marking tag</b>	NU0851
<b>End section</b>	XCKPT
<b>Plugin jumper</b>	PTC/4/02 (2 poles); PTC/4/03 (3 poles); PTC/4/04 (4 poles); PTC/4/05 (5 poles); PTC/4/10 (10 poles); PTC/4/00 (42 poles)
<b>APPROVALS AND MARKINGS</b>	CE



\* Not-pluggable relay\* Protection against short circuit, overload, overtemperature\* Suitable for DC loads\* Compact dimension  
1 Manufacturer and model of the components is not binding, technical data are to be considered typical2 (1) The maximum current depend on the number of actived output and the ambient temperature3 (2) Protection switch off the output current and yellow LED, The output restart automatically when the overload is removed. The current limiting depending also by operating temperature, for more accuracy or to protect cables with a lower rated current, an external fuse must be provided.4 (3) with the CK/PT end plate on the final module

## DESCRIZIONE DEL PRODOTTO

CKS-024DC/024DC/05 1 solid state relay 5-24Vdc/24Vdc 8A spring, not pluggable