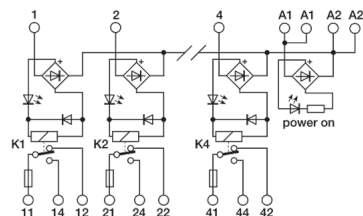


4 electromechanical relay
24Vac/dc SPDT 16A, screw, with fuse

Series	
Code	XR041U24F
Type	R41U24F
HS code	85364190
INPUT TECHNICAL DATA	
Input rated voltage	24 Vac/dc $\pm 10\%$
Pull in / drop out voltage type	16.8 V / 2.4 V
Current consumption	22 mA $\pm 10\%$
Turn ON / OFF time	10 ms / 5 ms
Protection circuit	Free-wheel diode, Reverse polarity
Connection terminal	2.5 mm ² screw
Input channels	4 pluggable
OUTPUT TECHNICAL DATA	
Contact type	SPDT, 1 form C, AgSnO ₂
Nominal current	16 A (250 Vac)
Continuous current	16 A
Max fuse current	6.3 A (250 Vac) (2)
Connection type	
GENERAL TECHNICAL DATA	
Operating temperature range	-20...+70°C
Input / output isolation	2.5 kVac / 60 s
Protection degree	IP 00
Overvoltage category / pollution degree	II / 2
Status indication	LED "DC OK" / LED "Relay"
Housing material	UL94V-0 plastic material
Dimensions (LxHxD)	70x93x75 mm
Approximate weight	210 g
Mounting information	on a rail, side by side
ACCESSORIES	
Mounting rail (IEC60715/TH35-7.5)	PR/3/AC, PR/3/AC/ZB, PR/3/AS, PR/3/AS/ZB
Mounting rail (IEC60715/TH35-15)	PR/3/PP, PR/3/PP/ZB, PR/3/PA, PR/3/PA/ZB
Spare part relay	8904073
APPROVALS AND MARKINGS	CE,



* Pluggable relay* AC/DC input voltage* SPDT contact* Allow PNP and NPN command* Contact protected by replaceable fuse
1 Manufacturer and model of the relay is not binding, technical data are to be considered typical2 (2) Fuses are not provided, they must be selected according to the load current. The max. value of 6.3 A is referred to the fuses holder capability according to EN 60127.

DESCRIZIONE DEL PRODOTTO

R41U24F
4 electromechanical relay 24Vac/dc SPDT 16A, screw, with fuse