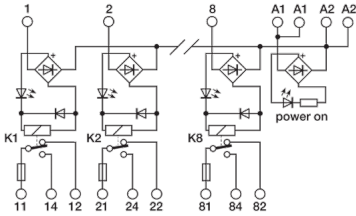


8 electromechanical relay
24Vac/dc SPDT 16A, screw, with fuse

Series	
Code	XR081U24F
Type	R81U24F
HS code	85364190
INPUT TECHNICAL DATA	
Input rated voltage	24 Vac/dc $\pm 10\%$
Pull in / drop out voltage type	16.8 V / 2.4 V
Current consumption	22 mA $\pm 10\%$
Turn ON / OFF time	10 ms / 5 ms
Protection circuit	Free-wheel diode, Reverse polarity
Connection terminal	2.5 mm ² screw type and 16 poles connector
Input channels	8 pluggable
OUTPUT TECHNICAL DATA	
Contact type	SPDT, 1 form C, AgSnO ₂
Nominal current	16 A (250 Vac)
Continuous current	16 A
Max fuse current	6.3 A (250 Vac) (2)
Connection type	2.5 mm ² screw type
GENERAL TECHNICAL DATA	
Operating temperature range	-20...+70°C
Input / output isolation	2.5 kVac / 60 s
Protection degree	IP 00
Oversoltage category / pollution degree	II / 2
Status indication	LED "DC OK" / LED "Relay"
Housing material	UL94V-0 plastic material
Dimensions (LxHxD)	137x93x75 mm
Approximate weight	326 g
Mounting information	on a rail, side by side
ACCESSORIES	
Mounting rail (IEC60715/TH35-7.5)	PR/3/AC, PR/3/AC/ZB, PR/3/AS, PR/3/AS/ZB
Mounting rail (IEC60715/TH35-15)	PR/3/PP, PR/3/PP/ZB, PR/3/PA, PR/3/PA/ZB
Spare part relay	8904073
APPROVALS AND MARKINGS	CE,



- * Pluggable relay
- * AC/DC input voltage
- * SPDT contact
- * Allow PNP and NPN command
- * Contact protected by replaceable fuse

1 Manufacturer and model of the relay is not binding, technical data are to be considered typical
2 (2) Fuses are not provided, they must be selected according to the load current. The max. value of 6.3 A is referred to the fuses holder capability according to EN 60127.

PRODUCT DESCRIPTION

R81U24F
8 electromechanical relay 24Vac/dc SPDT 16A, screw, with fuse