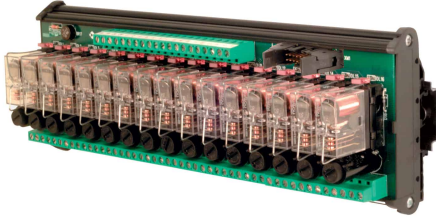
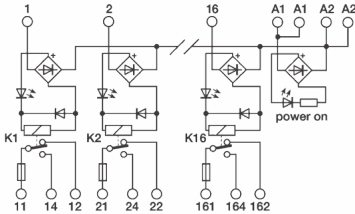


16 electromechanical relay
24Vac/dc SPDT 16A, screw, with fuse



| | |
|--|---|
| Series | |
| Code | XR161U24F |
| Type | R161U24F |
| HS code | 85364190 |
| INPUT TECHNICAL DATA | |
| Input rated voltage | 24 Vac/dc $\pm 10\%$ |
| Pull in / drop out voltage type | 16.8 V / 2.4 V |
| Current consumption | 22 mA $\pm 10\%$ |
| Turn ON / OFF time | 10 ms / 5 ms |
| Protection circuit | Free-wheel diode, Reverse polarity |
| Connection terminal | 2.5 mm ² screw type and 20 poles connector |
| Input channels | 16 pluggable |
| OUTPUT TECHNICAL DATA | |
| Contact type | SPDT, 1 form C, AgSnO ₂ |
| Nominal current | 16 A (250 Vac) |
| Continuous current | 16 A |
| Max fuse current | 6.3 A (250 Vac) (2) |
| Connection type | 2.5 mm ² screw type |
| GENERAL TECHNICAL DATA | |
| Operating temperature range | -20...+70°C |
| Input / output isolation | 2.5 kVac / 60 s |
| Protection degree | IP 00 |
| Overtoltage category / pollution degree | II / 2 |
| Status indication | LED "DC OK" / LED "Relay" |
| Housing material | UL94V-0 plastic material |
| Dimensions (LxHxD) | 250x93x75 mm |
| Approximate weight | 770 g |
| Mounting information | on a rail, side by side |
| ACCESSORIES | |
| Mounting rail (IEC60715/TH35-7.5) | PR/3/AC, PR/3/AC/ZB, PR/3/AS, PR/3/AS/ZB |
| Mounting rail (IEC60715/TH35-15) | PR/3/PP, PR/3/PP/ZB, PR/3/PA, PR/3/PA/ZB |
| Spare part relay | 8904073 |
| APPROVALS AND MARKINGS | CE, |



- * Pluggable relay
- * AC/DC input voltage
- * SPDT contact
- * Allow PNP and NPN command
- * Contact protected by replaceable fuse

1 Manufacturer and model of the relay is not binding, technical data are to be considered typical
2 (2) Fuses are not provided, they must be selected according to the load current. The max. value of 6.3 A is referred to the fuses holder capability according to EN 60127.

PRODUCT DESCRIPTION

R161U24F 16
electromechanical relay 24Vac/dc SPDT 16A, screw, with fuse