

SOLAR FIX
SERIES

CABUR SOLAR FIX
ANCHOR BRACKETS COMPLEMENTARY PLATES



FIXING PLATES (20 PCS PER PACK)

| PV MODULE THICKNESS | INTERMEDIATE | | TERMINAL | |
|---------------------|------------------|-----------------|------------------|-----------------|
| | PLASTIC MATERIAL | STAINLESS STEEL | PLASTIC MATERIAL | STAINLESS STEEL |
| 31 mm | ISFIXSPPLI | ISFIXSPAZI | ISFIXSPPL31T | ISFIXSPA31T |
| 35 mm | | | ISFIXSPPL35T | ISFIXSPA35T |
| 38 mm | | | ISFIXSPPL38T | ISFIXSPA38T |
| 40 mm | | | ISFIXSPPL40T | ISFIXSPA40T |
| 42 mm | | | ISFIXSPPL42T | ISFIXSPA42T |
| 46 mm | | | ISFIXSPPL46T | ISFIXSPA46T |
| 50 mm | | | ISFIXSPPL50T | ISFIXSPA50T |

ATTENTION: the type C bracket code ISFIX00C can only be combined with stainless steel end plates code ISFIXSPAZ*



FIXING BOLTS

| Code number | ISFIXVTAZ60 | ISFIXVTAZ65 | ISFIXVTAZ70 | ISFIXVTAZ75 |
|--------------------------|---|---|---|---|
| Description | M6 x 60 mm screw included of nut and washer | M6 x 65 mm screw included of nut and washer | M6 x 70 mm screw included of nut and washer | M6 x 75 mm screw included of nut and washer |
| PV module thickness (mm) | 31 | 35-38 | 40-42 | 46-50 |
| Qty per pack | 100 | 100 | 100 | 100 |

The fixing of photovoltaic modules on fret-shaped sandwich panels - metal insulation metal or metal only - requires the use of anchor brackets (type A, type B, type C, type D) and necessary components, to be selected based on the characteristics of the PV plant.

- Select the plate model based on the material chosen (plastic or stainless steel)
- Select the number of plates per type [intermediate and terminal] basing on the number and lay-out of PV modules and strings
- Select the type of terminal plates and the type of screws according to the PV modules thickness



AUTOMATION
AND CONTROL
SOLUTIONS



INDUSTRIAL
CONNECTIVITY
SOLUTIONS



SOLUTIONS
FOR ENERGY
TRANSITION



INDUSTRIAL
MARKING
SOLUTIONS



8 017963 243711
D034G24A



ANCHOR BRACKETS FOR PHOTOVOLTAIC MODULES



**FOR FIXING PV MODULES ON
FRET-SHAPED METAL SHEET ROOFS**

SOLAR FIX SERIES

OVER
70
YEARS

Cabur Srl
Headquarters (Italy)
17041 - Altare (SV)
Località Isola Grande, 45
T. +39 019 58999.1
F. +39 019 58999233
www.cabur.it
info@cabur.it

Cabur Romania Srl
Strada Calea Plevnei nr. 139
Corp B camera 25,26 sector 6
Bucaresti
T. +40 (21)31.17.140
F. +40 (21)31.17.140
www.cabur.eu
info.romania@cabur.eu

- **The Brackets** are light and easy to handle, to transport on site and to lift at roof level
- **The material** is not subject to oxidation, corrosion and UV degradation. It is resistant to low and high temperatures that can occur on roofs
- **The fixing structure** isolates the system from the fret-sheet cover, preventing corrosion of metals due to galvanic coupling

- **Assembly** is quick and easy
- **The particular installation method** of the IS FIX anchor brackets leaves under the photovoltaic field a gap of air not hindered by secondary structures. The ventilation, cooling the solar panels, increases their efficiency
- **Mechanical resistance** tested and by DEKRA GmbH laboratories

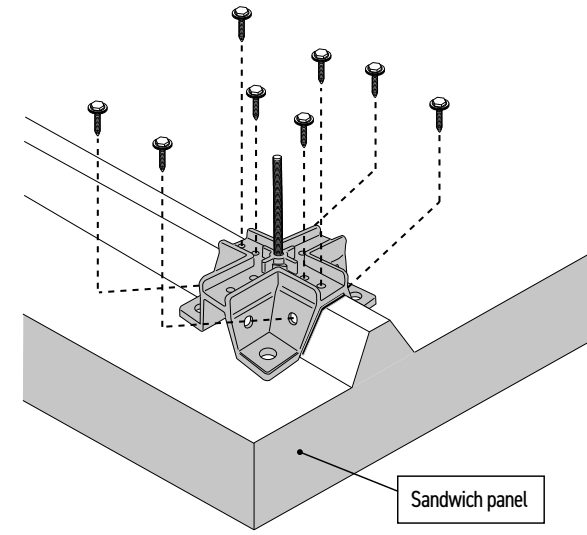


Fig. A - Anchor bracket fixing on fret-shaped panel (self-drilling screws not included)

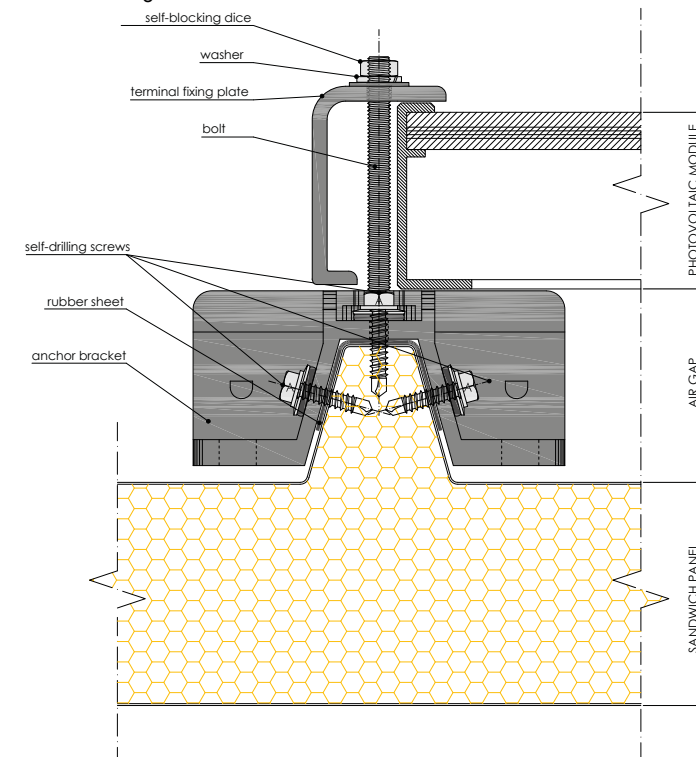


Fig. C - fixing with terminal plate
To be used at beginning-end of the photovoltaic module row

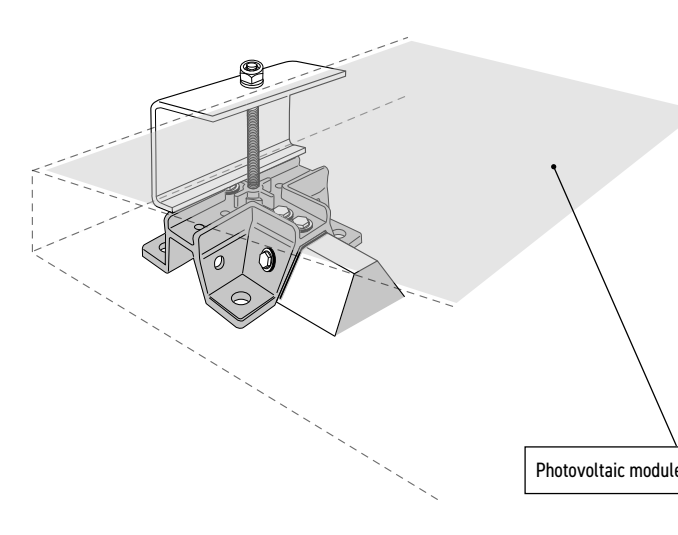


Fig. B - Photovoltaic module fixing between bracket and terminal plate

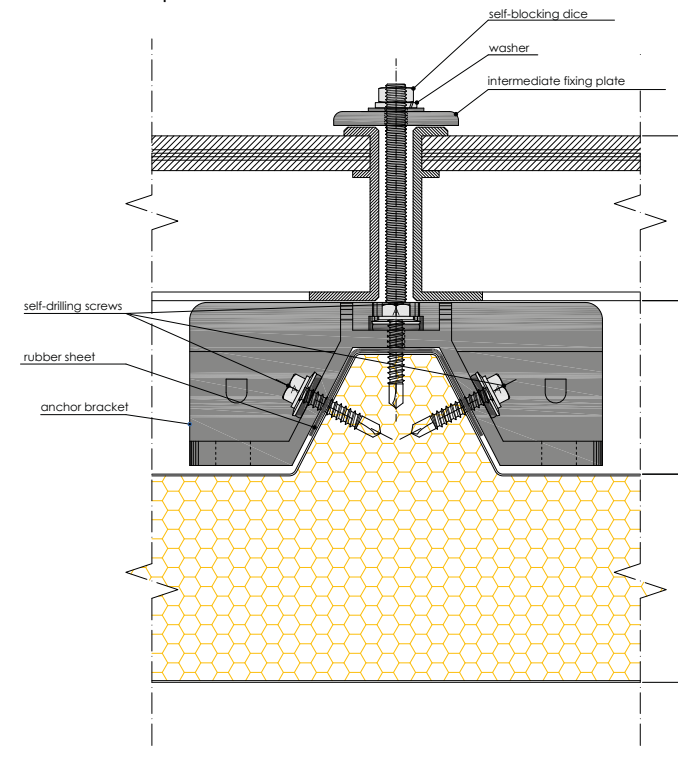


Fig. D - fixing with intermediate plate
To be used between 2 photovoltaic modules

| | | | |
|-----------------------|--|--|--|
| BRACKET TYPE A | | | Code ISFIX00 Anchor Bracket type A and rubber sheet 110x130 mm (no other accessory included) 20 PCS per pack |
| BRACKET TYPE B | | | Code ISFIX00B Anchor Bracket type B and rubber sheet 110x130 mm (no other accessory included) 20 PCS per pack |
| BRACKET TYPE C | | | Code ISFIX00C Anchor Bracket type C and rubber sheet 110x130 mm (no other accessory included) 20 PCS per pack Can only be combined with stainless steel end plates codes ISFIXSPAZ* |
| BRACKET TYPE D | | | Code ISFIX00D Anchor Bracket type D and rubber sheet 110x130 mm (no other accessory included) 20 PCS per pack |

NOTE: The drawings are purely indicative. The proportions may not correspond to the real ones. Please refer to the above quotes for dimensions.

NUMBER OF BRACKETS CALCULATION

To calculate the quantities, the following must be considered:

- the number of PV panels (P) contained in each row
- the number of rows of panels (N)
- the number of strings (Sr)

Calculation of the number of brackets (B):

- for 1 row of panels: $B = 2P + 2$
- if the string consists of N rows: $B = N(2P + 2)$
- if Sr is the number of strings in the system:
 $B = Sr N(2P + 2)$

NOTE: The formulas shown provide the exact number of brackets needed for square or rectangular strings with continuous structure that is, without empty spaces inside them. For strings having different or irregular shapes, the formulas provide a purely indicative value.

ATTENTION: to ensure maximum adaptability of the Solar Fix system to the specific needs of each PV plant, the brackets are delivered without the plates and the screws, which will need to be selected based on the height and arrangement of the panels. Accordingly, each component will have to be ordered (brackets, plates, bolts - while self drilling screws are never included).

HOW TO ORDER: each package contains bracket and its rubber sheet (20 pcs per pack). It does not contain plates, bolts and components accessories, which must be ordered separately.

